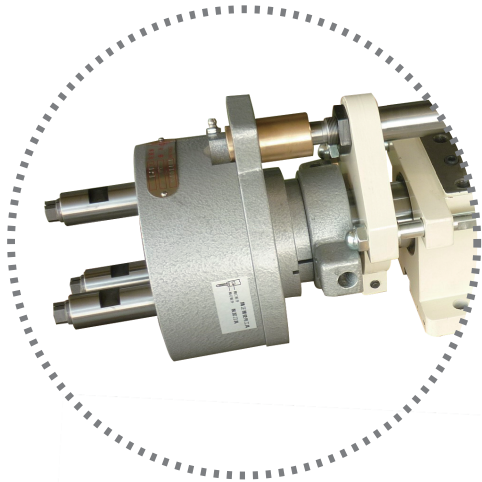


攻牙機 >>>

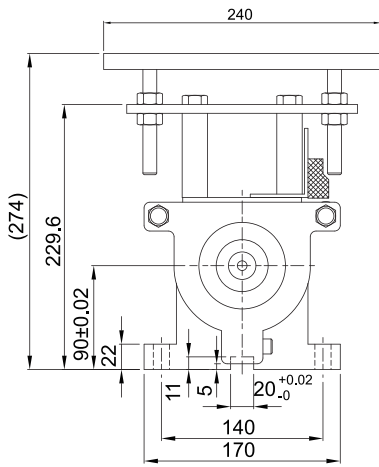
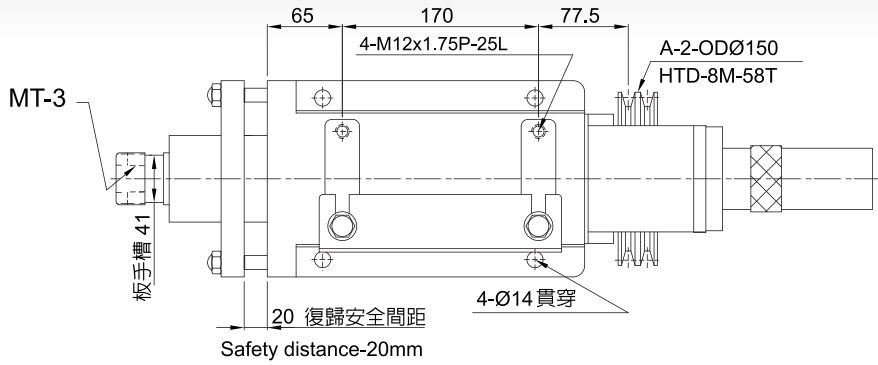


SWN7-85

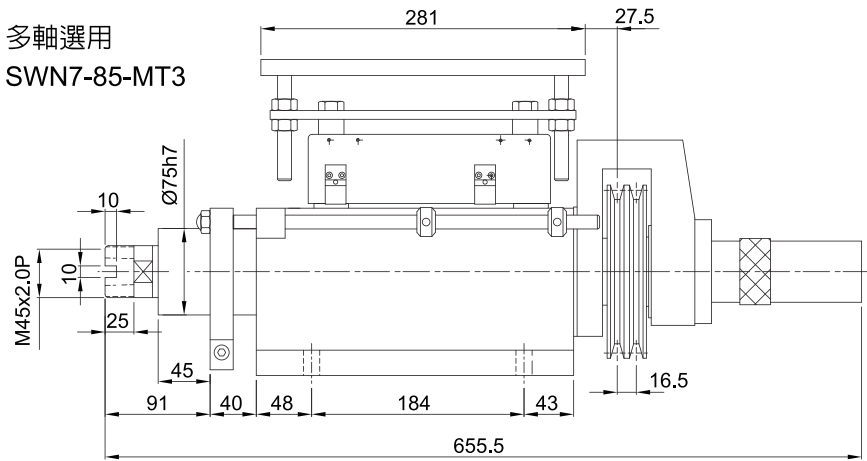
攻牙主軸頭 Tapping Spindle Units

規格 Norms	Model	SWN7-85
攻牙能力	Tapping Capacity	M30(S45C)
最大行程	Max. Stroke	85mm
螺紋導程	Thread Guide Stroke	0.7~2.5mm
容許轉速	Spindle Max. Speed	1000RPM
傳動規格	Transmission Wheel Type	A-2-ODφ150 HTD-8M-58T
淨重	Net Weight	65kg
<b>耗材 Consumables</b>		
主軸軸承	Spindle Bearing	6008Z-3
皮帶輪軸承	Pulley Bearing	6010ZZ-3
主軸油封	Spindle Oil Seal	TC-45x68x9-1 TC-75x95x12-1
導桿襯套	Oilless Slide Bearings	DU-12x20 - 2 (自潤軸承)

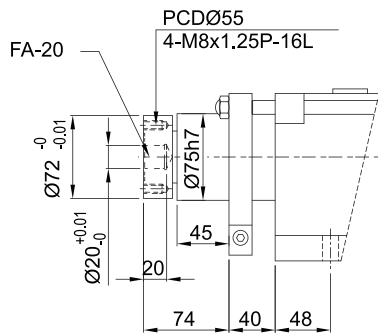
SWN7-85-MT3



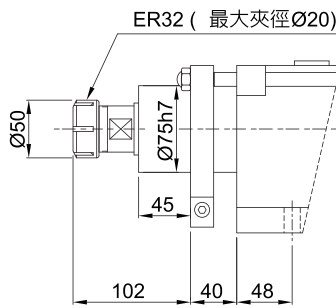
多軸選用  
SWN7-85-MT3



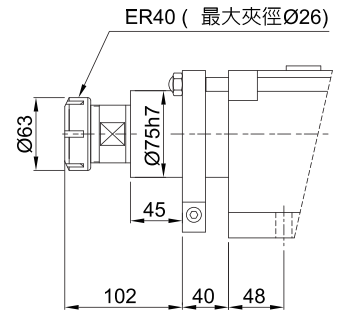
SWN7-85-FA20



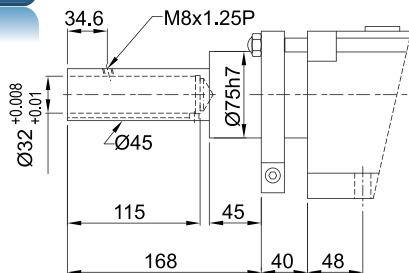
SWN7-85-ER32



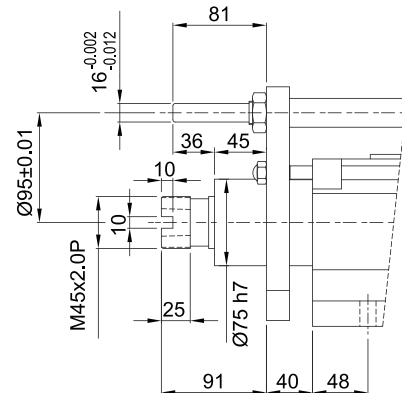
SWN7-85-ER40



SWN7-85-AS32



SWN7-85-MT3HP



MT-3-HP 多軸三點支撐